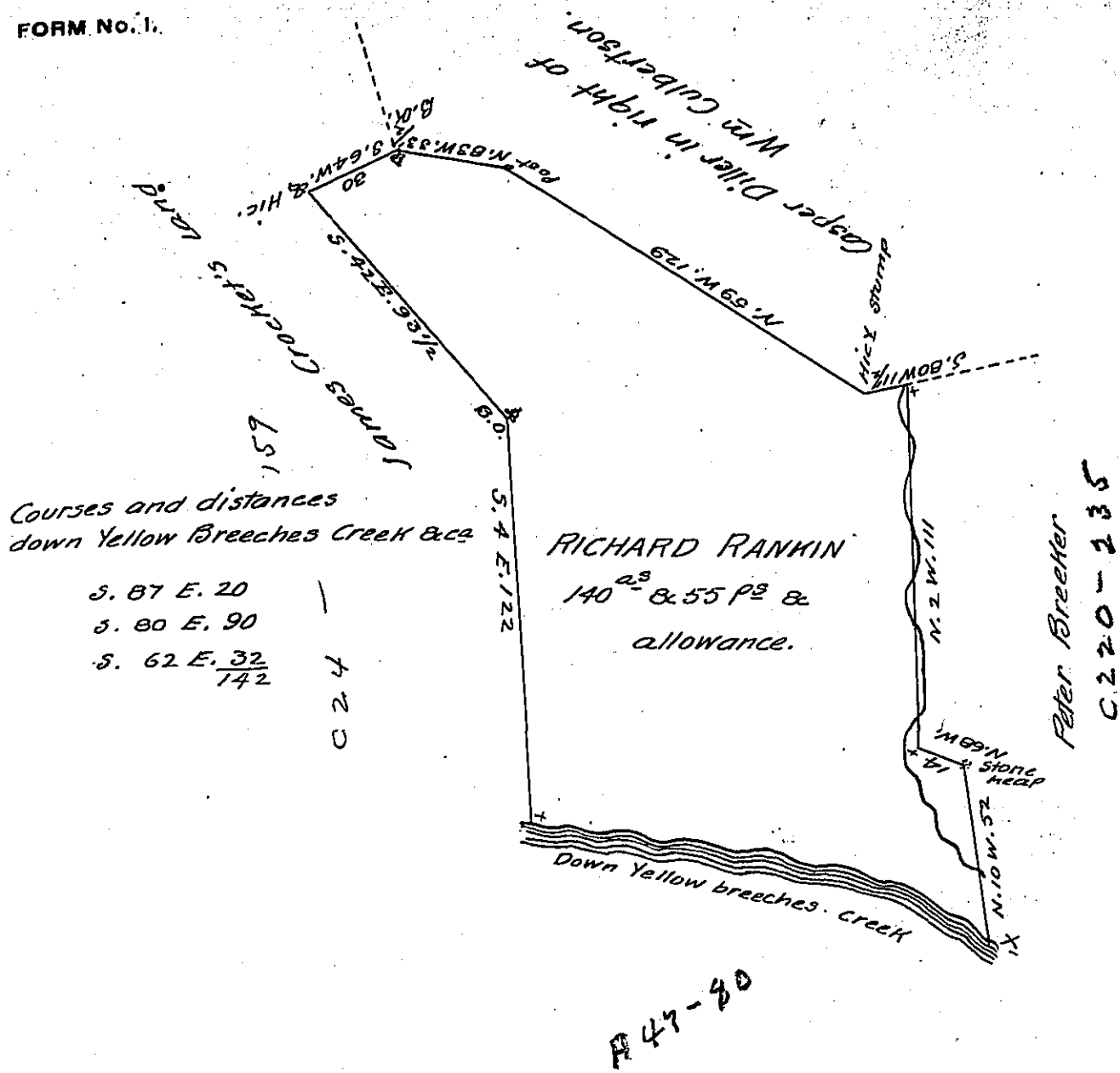


FORM No. 1.



The Draught of a tract of land situate in Allen Township Cumberland County containing one hundred and forty acres and 55 Perches and allowance of six Per Cent for Roads &c. Surveyed Sept<sup>r</sup> 27<sup>th</sup> 1793 in pursuance of a Warrant granted by the late Proprietaries to Richard Franklin Dated June 8<sup>th</sup> 1776

P. Sam<sup>l</sup> Lyon, D.S.

To Daniel Bradhead, Esquire,  
Surveyor General of Pennsylvania

IN TESTIMONY that the above is a copy of the original remaining on file in the Department of Internal Affairs of Pennsylvania, made conformably to an Act of Assembly approved the 16th day of February, 1833, I have hereunto set my Hand and caused the Seal of said Department to be affixed at Harrisburg, this fifteenth day of August 1906.

*Geo. P. Brown*  
Secretary of Internal Affairs.